



2025 57th Hartley 16 and 2025 Noelex 22 National Championships

29th January to 1st February 2025

Notice of Race

*The Organising Authority is the New Plymouth Yacht Club Inc.
Ocean View Parade P.O. Box 576, New Plymouth.*

Notice of Race (NoR)

NB: The notation '[DP]' in a rule in the Notice of Race means that the penalty for a breach of that rule may, at the discretion of the protest committee, be less than disqualification.

1 RULES

- 1.1 The event is governed by the rules as defined in The Racing Rules of Sailing.
- 1.2 The Yachting New Zealand Safety Regulations Part 1 for Hartley 16 class and Part 5 category C for Noelex 22 class shall apply.
- 1.4 Appendix T, Arbitration will apply.
- 1.5 While racing, all Noelex 22 boats must leave their centreboard in the “fully downward” position at all times and in addition, those with provision as provided in their class rules and YNZ Safety Regulations, must “lock” their centreboard in the “fully downward” position at all times.
- 1.6 Competitors shall wear an approved PDF (personal floatation device) at all times while afloat. Inflatable life jackets are not permitted at this regatta.
- 1.7 All Noelex 22 boats competing must carry a minimum of five (5) Litres of fuel at the start line of racing.

2 SAILING INSTRUCTIONS

- 2.1 The sailing instructions will be available at registration on 28th January 2025.
- 2.2 The sailing instructions will consist of the instructions in RRS Appendix S, Standard Sailing Instructions, and supplementary sailing instructions that will be on the official notice board located at New Plymouth Yacht Club.

3 COMMUNICATION

- 3.1 The official notice board is located at the New Plymouth Yacht Club.
- 3.2 [DP] Except in an emergency, a boat that is racing shall not make voice or data transmissions and shall not receive voice or data communication that is not available to all boats. This restriction also applies to mobile telephones.

4 ELIGIBILITY AND ENTRY

- 4.1 The regatta is open to all boats of the Hartley 16 and Noelex 22 classes that comply with the class rules and whose owner(s) are current financial members of their respective Class Associations.
- 4.2 A handicap system may be used to provide additional results alongside the official regatta results.
- 4.3 Eligible boats may enter by completing the entry form and submitting it by 5pm Monday 20th January 2025 and depositing the required entry fee into the following bank account 15-3953-0795504-00 (boat name as reference).
- 4.4 Boats may enter the event by registering online at:
<https://www.npyc.co.nz/events/hartley-16-and-noelex-22-national-championships>
- 4.5 To be considered an entry in the event, a boat shall complete all registration requirements and pay all fees.
- 4.6 Late entries, accompanied by the contest entry fee plus the late entry fee may be accepted at the race committee's discretion until 5pm Wednesday 29th January 2025.
- 4.7 To be eligible to compete in this event each entrant and crew member(s) shall be a financial member of a club recognised by the entrant's and crew member(s) national authority.
- 4.8 Each boat shall be a member of their classes association.

5 FEES

- 5.1 Entry fees are as follows:

Class	Entry Fee	Late Fee
Hartley 16	\$150	\$50
Noelex 22	\$150	\$50

6 ADVERTISING

- 6.1 Boats may be required to display advertising chosen and supplied by the organizing authority.

7 SCHEDULE

- 7.1 Registration and equipment inspection and event measurement:

Date	From	To
Wednesday 29 th January 2025	1600hrs	1830hrs
Thursday 30 th January 2025	0800hrs	0900hrs

- 7.2 Briefing:

Date	At
Thursday 30 th January 2025	0900hrs

- 7.3 Dates of racing:

Date	Hartley 16	Noelex 22
Thursday 30 th January 2025	3 races	3 races
Friday 31 st January 2025	3 races	3 races
Saturday 1 st February 2025	3 races	3 races

7.4 Number of races:

Classes	Total Number Scheduled	Races per Day Scheduled	Races per day maximum	Target time Minutes.
Hartley 16	9	3	4	35-40 mins
Noelex 22	9	3	4	35-40 mins

7.5 The scheduled time of the warning signal for the first race each day is 1057hrs.

7.6 On the last scheduled day of racing no warning signal will be made after 1500hrs.

8 EQUIPMENT INSPECTION

8.1 [DP] Boats shall be available for equipment inspection from Wednesday 29th January 2025.

8.2 The following equipment will be inspected or measured:

Hartley 16 - 1x Set of sails signed for the contest, paddles, bucket, tow rope, centreboard lock down.

Noelex 22 - Sails, spars, weight, and safety gear may be measured and checked.

8.3 Boats may be inspected at any time.

8.4 [DP] Boats shall also comply with RRS 78.1 at all times.

9 START

9.1 For the Hartley 16 and Noelex 22 classes RRS 26 is changed to read as follows:

Starting Sequence:

<u>Starting signal</u>	<u>Visual signal</u>	<u>Sound signal</u>	<u>Means</u>
3 minutes	Class Flag	One	Warning signal
2 minutes	P,U or Black Flag	One	Preparatory signal
1 minute	Preparatory flag removed	One	One minute
0	Class flag removed	One	Starting signal

10 VENUE

10.1 NoR Attachment A shows the plan of the event venue and the location of the racing areas.

11 COURSES

11.1 The course(s) to be sailed will be as follows:

Hartley 16 – Windward/Leeward

Noelex 22 – Triangle/Windward/Leeward

12 PENALTY SYSTEM

12.1 For the Hartley 16 and Noelex 22 classes RRS 44.1 is changed so that the Two-Turns Penalty is replaced by the One-Turn Penalty.

13 SCORING

13.1 5 races are required to be completed to constitute a series.

13.2 (a) When fewer than 6 races have been completed, a boat's series score will be the total of her race scores.

(b) When from 6 to 9 races have been completed, a boat's series score will be the total of her race scores excluding her worst score.

14 RISK STATEMENT

14.1 RRS 3 states: 'The responsibility for a boat's decision to participate in a race or to continue to race is hers alone.' By participating in this event each competitor agrees and acknowledges that sailing is a potentially dangerous activity with inherent risks. These risks include strong winds and rough seas, sudden changes in weather, failure of equipment, boat handling errors, poor seamanship by other boats, loss of balance on an unstable platform and fatigue resulting in increased risk of injury. **Inherent in the sport of sailing is the risk of permanent, catastrophic injury or death by drowning, trauma, hypothermia or other causes.**

15 INSURANCE

15.1 Each participating boat shall be insured with valid third-party liability insurance with a minimum cover of \$1,000,000 per incident or the equivalent. Certificate of insurance is to be presented at registration.

16 PRIZES

16.1 Prizes will be given as follows:

Hartley 16

Line Honors

Handicap

First Family crewed boats

Other prizes may also be awarded

Noelex 22

Line Honors

Handicap

17 FURTHER INFORMATION

17.1 For further information please contact:

Jason Holdt

New Plymouth Yacht Club,

P.O.Box 576,

New Plymouth.

Phone 0274328899

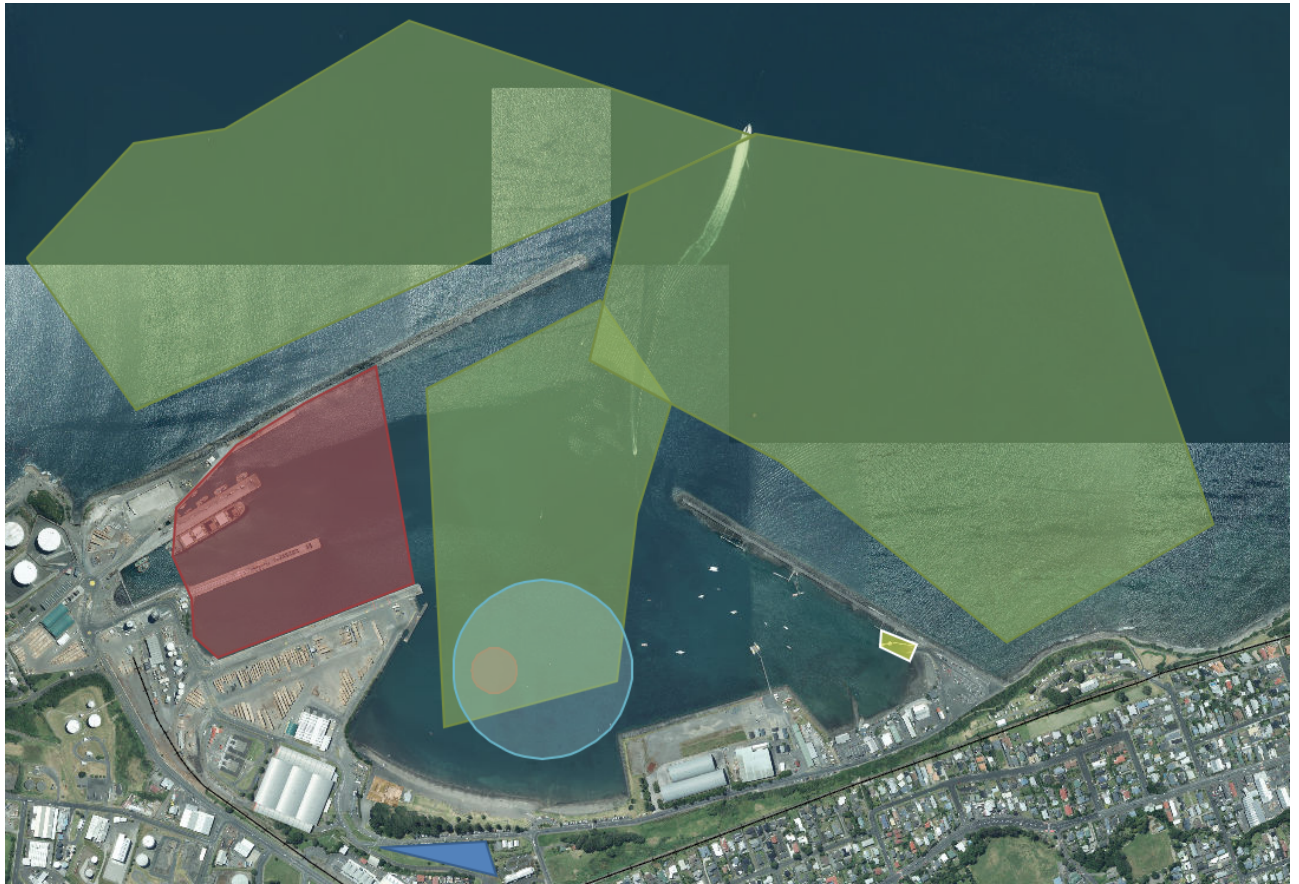
jasonholdt@gmail.com

Wayne Holdt

0272853796

wayne@yachtingnz.org.nz

Attachment A:



Map of the Local Area and Harbour

- Red Zones - Out of Bounds (Port and reef)
- Dark Blue – Vehicle and Trailer Parking
- Green Zone - Indicative Racing areas
- Yellow – Public Launching Ramp
- Orange – New Plymouth Yacht Club